

destiny. io2 digital pen

hardware

Destiny has the digital pen that fits any custom digital writing solution, including its Bluetooth-enabled version designed to address the current shortcomings of mobile data capture devices. A digital pen with Bluetooth wireless technology, used in combination with a wireless handheld communication device featuring Bluetooth technology, can help an organisation's mobile workforce more efficiently gather, transmit and share important data - in real time.

Destiny's experience and expertise in producing digital writing solutions ensure that our pens provide the comfort, quality and innovation of a brand customers have come to trust.

The destiny io2 digital pen with bluetooth®

Offering performance and reliability in a compact size, the Destiny io2 Digital Pen with Bluetooth is the perfect solution for the mobile professionals. Although significant progress has been made at enabling hand-held mobile devices to capture and transmit data in real-time, size and interface limitations make entering large amounts of information into a Bluetooth enabled mobile device phone quite cumbersome. For most applications, people still prefer using pen and paper - it's the most accurate, efficient and comfortable way of gathering data.

The Destiny io2 Digital Pen is available in a 5-pack configuration for commercial deployment. Each 5-pack includes a digital pen with Bluetooth, desktop cradle and extension, and wall plug to USB charger.

Desktop cradle

A desktop USB cradle supports docking and charging the pen. The cradle is USB powered and requires no additional power adapters.

Destiny io2 wall plug to USB charger

A portable and lightweight AC wall plug to 5V USB adapter enables you to conveniently charge your pen through your USB cradle connection. It is compatible for international travel with wall socket support for the United Kingdom, Europe and United States. A wall plug is included with each Destiny io2 Digital Pen Pack.

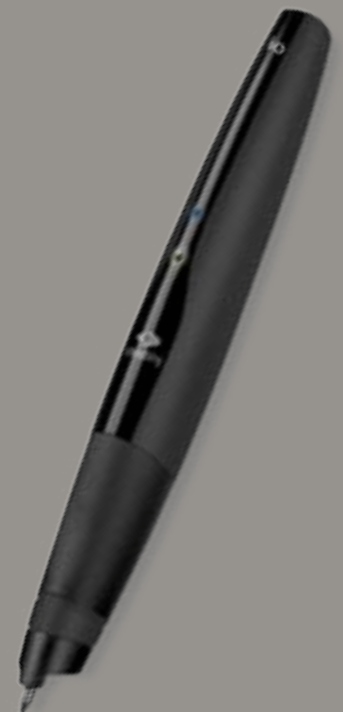
+44 (0) 8458 55 88 55 | sales@destinyplc.com | destinyplc.com

destiny. technology on the move™



gain an edge in today's competitive market place

Bring your pen and paper processes into the digital world. Since pen and paper remain the easiest and most comfortable way for workers to be productive, destiny's digital writing solutions can improve and automate the form-dependent workflow that companies rely on. Without changing how employees work, the adoption of digital writing eliminates inefficiencies in the existing processes with flexible, cost effective solutions.



destiny. io2 digital pen *continued...*

Software

A Bluetooth Digital Pen Configuration Utility is available to support pen configuration and setup. The utility communicates with pen through USB connection only and contains tabbed dialogue offering the following functionality:

Multi-pen support

- Several docked pens can be supported simultaneously.

Pen state and status

- Memory and Battery Indicators
- Bluetooth Passkey
- Clock Display (Network and Local Pen)
- Auto-power Off (Disabled, 30 and 60 minutes)

Bluetooth

- Bluetooth Passkey Set:
 - Custom code can be set. Setting custom code also clears pen stroke memory for added security. Please note the Bluetooth Passkey is not viewable in the Digital Pen Configuration Utility user interface.
- Discoverable On/Off:
 - Commands the action at pen cap off.

User information

- General, Delivery Address, and Invoice Address can be loaded from settings saved in pen memory.

ISP settings

- Primary and Secondary settings can be loaded from the settings saved in pen memory.

Paper

Destiny's partner network of Anoto certified digital paper printers can help any business create custom digital forms that are accurate and easy to use.

Solutions

Digital writing solutions represent a new way to help you and your customers reach their goals. Whether you want to implement a package or custom digital writing solution, or you want to develop your own, destiny has made it easy to find the information you need.

Please visit www.destinyplc.com to learn more or call our sales line on:
+44 (0)8458 55 88 55

+44 (0) 8458 55 88 55 | sales@destinyplc.com | destinyplc.com

destiny. technology on the move™



dimensions and weight

All dimensions and weight are typical values

| item | typical | conditions / refs / comments |
|---|--|------------------------------|
| pen/cap: | | |
| Z - Length [mm] | 148.2 / 156.7 | Cap off / Cap on |
| X - Width [mm] | 17.8 / 21.6 | Cap off / Cap on |
| Y - Width [mm] | 22 / 24.7 | Cap off / Cap on |
| Weight [g] | 28.9 / 37.5 | Cap off / Cap on |
| cradle | | |
| Length [mm] | 88.5 | |
| Width [mm] | 64.5 | |
| Height [mm] | 25.5/64.5 | Closed/open |
| Weight [g] | 77 | Including cable |
| Cable Length [cm] | 40.5 | |
| Extension cable length [cm] | 140 | |
| memory specifications | | |
| Memory type | Flash | |
| Strokes memory size [KB] | 1270 | |
| Max physical pages | 400 | |
| Data retention [years] | 5 | |
| battery capacity, life and charge values are typical | | |
| battery specifications | | typical |
| Battery type | Lithium Ion | |
| Battery capacity [mAh] | 180 | |
| Battery life, cap on: | 280 days | |
| Battery life, cap off: | 18 hours | |
| Battery life, cont. writing: | 3 hours | |
| Battery charge time: | 2 hours | |
| bluetooth® specifications | | |
| Bluetooth Compatibility | Bi-directional, Bluetooth 1.1 / 1.2, class 2 | |
| Bluetooth Range | 3 meters [Typical] | |
| Bluetooth Passkey | 4 Digit [Customisable] | |
| Bluetooth Security Mode | Level 3: Authentication and Link Encryption | |
| Bluetooth Interface Profiles | Bluetooth Dial Up Networking Profile (DUN) Bluetooth Object Push Profile (OPP) Bluetooth Serial Port Profile (SPP) | |



**Bluetooth Interface Profile Compatibility*

Interoperability between the destiny io2 digital pen with Bluetooth and products with Bluetooth wireless technology (specifications 1.1 / 1.2) is not guaranteed. This functionality should be validated by the application developer or integrator before mobile device selection is made.

+44 (0) 8458 55 88 55 | sales@destinyplc.com | destinyplc.com

destiny. technology on the move™



dimensions and weight *continued...*

| anoto communication protocols | |
|---|---|
| *Network Based Open Services via Phone (Bluetooth Dial Up Networking) | |
| Anoto File Push (PGC) to paired PC or mobile device (Bluetooth Object Push Profile) | |
| Anoto File Push (PGC) to paired device using "Anoto OBEX" serial port (Bluetooth Serial Port Profile) | |
| The protocols are selected by the Anoto paper templates | |
| reliability | |
| Unit, repeated drop / shock | 100cm, on steel surface, 6 faces w/o cap, 6 faces w/ cap |
| Bump resistance | 150m/s ² , 6 msec, 1000 bumps/axis, 3 axes, total 3h |
| Electrostatic discharge | 8kV (air) / 4kV (contact) |
| Electric Fast Transient/Burst | 1.0kV |
| Spillage/Splash Resistance | 60ml of Coke on operational unit |
| Cap insertion life | 100,000 cycles |
| Docking insertion life | 15,000 cycles |
| MTTF | 150,000 hours |
| surface resistance tests | |
| Chemical | Soaked flannel, 60 cycles |
| | Ethanol, 95% analytical grade |
| | Isopropyl Alcohol, 70% |
| | Acetone, 95% analytical grade |
| | Artificial sweat, 5% isotonic saline solution |
| Abrasion Linear | Abraser, 350 g, 100 cycles of 1 inch |

** Network Based Open Service Compatibility
Please note that Network Based Open Services (NBOS) services rely on system interactions between digital pens, Bluetooth mobile devices, operator GSM and GPRS networks and network servers. This functionality should be validated by the application developer or integrator before mobile device selection is made.*



+44 (0) 8458 55 88 55 | sales@destinyplc.com | destinyplc.com

destiny. technology on the move™



dimensions and weight *continued...*

| country | safety approvals | emissions and immunity |
|---------------------------------------|--|---|
| USA | cTUVus Approval - UL60950 - 1: 2003 R7.06 CAN/CSA - CH22. 2 No. 60950 - 1 - 3 ITE device, Class III, SELV, supplied by Limited power source | Declaration of Conformity (DoC) FCC as per FCC CFR 47: Part 15: 1995 Class B (for the cradle) FCC ID as per FCC CFR 47: Part 15: 1995 Class C (FCC ID 0018023036) |
| Canada | cTUVus Approval - UL60950 - 1: 2003 R7.06 CAN/CSA - CH22. 2 No. 60950 - 1 - 3 | ICES-003:1997 (for the cradle through FCC approval) RSS-210 Issue 5 November 2002 (Low Power License-Exempt). Radio communication Devices) (accepts & recognizes FCC Part 15 Class C) |
| Europe | LVD Directives 73/23/EEC (safety part of CE marking) EN 60950-1 :2001+A11 T-mark : as per EN 60950: 2001 (safety part of CE marking.) Laser Safety EN 60825-1 (1994) + A11 (1996) + A2 (2001) + A1 (2002) | R&TTE Directive 1999/5/EEC EMC : EN 301 489-1 v.1.4.1 (2002-08) EN 301 489-17 v.1.2.1 (2002-08) Emission : 55022 class B Immunity : EN 61000-4-2:1995+A1:1998+A2:2000 Electrostatic Discharge (ESD) EN 61000-4-3:1996+A1:1998+A2:2000 Immunity to Radiated, Radio frequency Electromagnetic field, 80 MHz to 1000 MHz, EN 61000-4-4: 1995 Electrical Fast transients / Bursts Immunity Test. EN 61000-4-5: 1995 : Surges, common and differential mode on AC power ports EN61000-4-6 :1996 : RF common mode (current clamp injection) on AC and DC ports (0,15 - 80 MHz) EN61000-4-11 : 1994 : Voltage dips and interruptions RF : EN 300 328 v.1.6.1. (2004-11) |
| Australia/ New Zealand | N/A | C-Tick mark : EMC as per AS/NZS3548 RF as per AS/NZS 4771:2000 |
| Russia | T-mark : as per EN 60950: 2001 (safety part of CE marking.) Laser Safety EN 60825-1 (1994) + A11 (1996) + A2 (2001) + A1 (2002) | GOST OK 005-93 (04 3310) |

For further information on the International Market and Safety certifications please
contact finance@destinyplc.com or visit
<http://www.destinyplc.co.uk/flash/#/thedigitalpen/certification/>

+44 (0) 8458 55 88 55 | sales@destinyplc.com | destinyplc.com

destiny. technology on the move™

